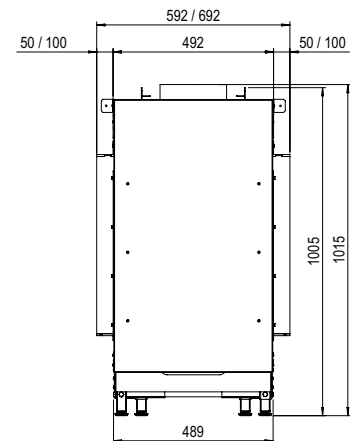
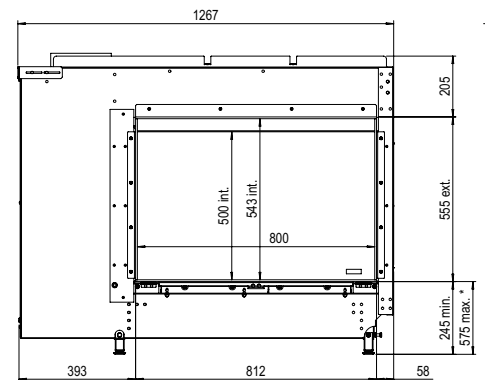
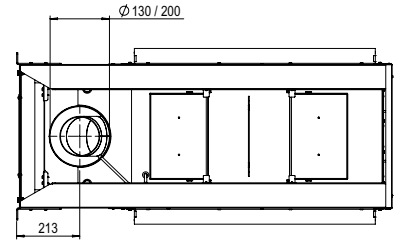


# MatriX | 800/500 ST Large logs



**ENERG**  
енергия · ενεργεια

**Faber** MartiX 800/500 RD, ST

**B**

**10,3**  
kW

ENERGIA · ЕНЕРГИЯ · ΕΝΕΡΓΕΙΑ · ENERGIA · ENERGY · ENERGIE · ENERGI

2015/1186

## Specifications MatriX 800/500 ST (LL)

Type	Built-in
Model	See through model
Exterior dimensions WxHxD in mm	1267 x 1015 x 592
Fire display WxHxD in mm	800 x 500
System	Log Burner 2.0®
Decoration	Log set met grote stammen
Back walls	Smooth steel
Remote	ITC remote
Power (kW)	10,3
Operating system	Honeywell
Energy label	B

### OPTIONS

- Glass back wall black
- Anti-reflective glass
- Symbio Module
- Adjustable legs

Depth frame 100mm will be available again in 2021. Faber will inform you when the frame becomes available in due course.

There is **so much to tell...**

For more information, please take a look at the website

[www.faberfires.com](http://www.faberfires.com)